



YAEGER & JORDAN asociados s.l., formado por arquitectos e ingenieros, actúa desde 2001 en el campo de la promoción inmobiliaria, la arquitectura y la ingeniería, diseño de proyectos y liderazgo de la dirección de obra completa. Sus promotores y accionistas son profesionales con una amplia experiencia en el sector que han desarrollado su carrera liderando empresas de primer nivel.

Servicio de consultoría inmobiliaria integral (localización de suelo, elaboración proyecto arquitectónico, desarrollo proyecto de viabilidad, estudio de mercado, ejecución proyecto y comercialización), de Project Management, de real estate y de construcción directa.

La Empresa, dedicada inicialmente a la arquitectura se enfoca también a la promoción inmobiliaria para ofrecer el producto llave en mano al mejor precio posible, tiene experiencia y habilidades en el campo del análisis y cálculo de estructuras, dimensionamiento de instalaciones y gestión de soluciones de ahorro energético que solicite cada proyecto consolidado. Además está siempre buscando nuevas ideas en el campo de la arquitectura y la innovación mediante el estudio de proyectos experimentales.

El grupo ha recibido las máximas calificaciones según los estándares europeos e internacionales, incluyendo el certificado ec-4993/09 rating a+ y las autorizaciones de calificación para todo tipo de obras y proyectos en todos los niveles. dentro del campo general de la edificación. El grupo está especializando en el diseño, dirección y construcción de edificios educativos como el "Colegio Villamadrid" o el "escuela Quercus de Boadilla" entre muchos otros. también está especializada en el campo de la restauración, de edificios antiguos existentes como el "Hotel-Spa Mondariz en Pontevedra", Galicia.

Para cumplir con las expectativas y requisitos de calidad de sus clientes, el grupo ha desarrollado e implementado un sistema de gestión de la calidad de acuerdo a la ISO 9001:2008 que incluye los procesos, responsabilidades, recursos... establecido para garantizar la satisfacción del cliente y la mejora continua de la calidad. Asimismo, la empresa se encuentra inscrita como contratista de obras en el registro oficial de empresas clasificadas del ministerio de economía y finanzas.

YAEGER & JORDAN, associates architects + engineers s.l. It has been operating since 2001 in the field of real estate development, architecture and engineering, project design and leadership of the complete construction management. Its promoters and shareholders are professionals with extensive experience in the sector who have developed their careers leading top-tier companies.

Giving service to the customer in the real estate consulting (location of land, preparation of architectural project, development of feasibility project, market study, execution and marketing), Project Management, until the and final construction.

The Company, dedicated primarily to the technical field of architecture, It has also has experience and skills in the field of analysis and calculation of structures, dimensioning of facilities or management of energy saving solutions that are requested in consolidated projects. Always looking for new ideas in the field of architecture and innovation by studying experimental projects, its been focusing in the final product to offer living places to every budgeted.

The group has received the highest qualifications according to European and international standards, including the ISO-4993/09 rating A+ certificate and qualification authorizations for all types of works and projects at all levels. within the general field of construction. The group is specialized in the design, management and construction of educational buildings such as the "Colegio Villamadrid" or the "Escuela Quercus de Boadilla" among many others. It is also specialized in the field of restoration of existing old buildings such as the "Mondariz Hotel-Spa in Pontevedra", Galicia.

To meet the quality expectations and requirements of its customers, the group has developed and implemented a quality management system in accordance with ISO 9001:2008 that includes the processes, responsibilities, resources... established to guarantee customer satisfaction. and continuous quality improvement. Likewise, the company is registered as a works contractor in the official registry of classified companies of the Ministry of Economy and Finance.

Residencial and Offices Building Projects

YAEGER & JORDAN

architects + engineers

C/ General Prim 13 28004 Madrid

C/ Príncipe de Viana 11 28023 Madrid

C.I.F. 684138981



DESIGNERS OFFICES IN MADRID. ARCHITECTS: Y&J

AVENIDA TRANSVERSAL. TORRELODONES

Budget: 600.000€

Access to the house is made by foot from the street that will be a continuation of the existing one. In the plastic treatment of the facades, the relationship of the building with its surroundings has been taken into account. The interior spaces have been organized in such a way that the house is functional and comfortable for users. The promotion and design offer the highest quality constructions with concrete walls for bunker-type buildings with the best insulation and the best energy efficiency.

YAEGER & JORDAN
architects · engineers



DESIGNERS OFFICES IN MADRID. ARCHITECTS: Y&J

AVENIDA TRANSVERSAL. TORRELODONES

Budget: 600.000€

Access to the house is made by foot from the street that will be a continuation of the existing one. In the plastic treatment of the facades, the relationship of the building with its surroundings has been taken into account. The interior spaces have been organized in such a way that the house is functional and comfortable for users. The promotion and design offer the highest quality constructions with concrete walls for bunker-type buildings with the best insulation and the best energy efficiency.

YAEGER & JORDAN
architects · engineers



DESIGNERS OFFICES IN MADRID. ARCHITECTS: Y&J

Budget: 500.000€

In some plots in the mountains a segregation is made and luxury houses are made with the best foundations and the best qualities. the structures will be a mix of load-bearing concrete walls and steel reinforcements, clad stone walls and hollow brick in the rest, treated on the intrados with thermal insulation of sprayed polyurethane foam, self-supporting galvanized metal structure with thermal and acoustic insulation of wool rock and double plate finish of the "plasterboard" type, except in tiled areas and cabinets, who wear a plaque.



DESIGNERS OFFICES IN MADRID. ARCHITECTS: Y&J

CALA BONA MALLORCA Budget: 900.000€

Promotions in Mallorca with semi-detached houses but forming a luxury condominium. The promotion offers the highest qualities at the best price, the use is total since the use of the terraces has been negotiated with the town hall. Once again, the real estate standard that unites the group is based on the energy efficiency of the complex currently under development.

YAEGER & JORDAN
architects + engineers



Apartment building, storage rooms and garage
c/ Segovia 47, MADRID
Budget: 7.2 M€
Timeframe: 18 months
Property: EPCENORA



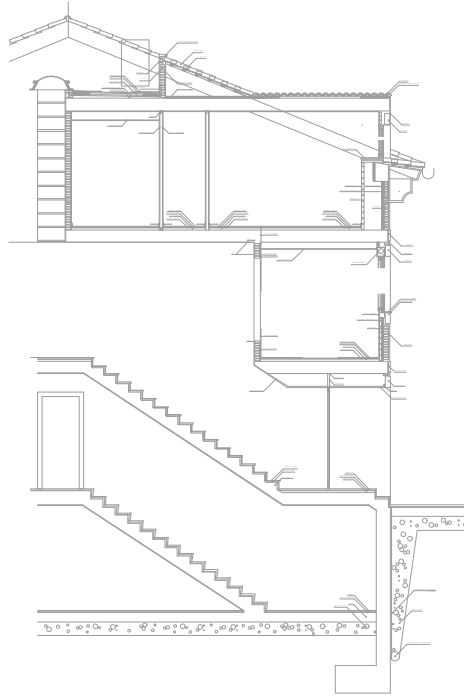


72 homes, garages and storage rooms. C / < (Madrid) Budget: 6.3 M Term: 18 months.

RESIDENCIAL BUILDING "Parque de la Fuente" (Fountain Park).
Brion. Castilla la Mancha

The building has a gross floor area of 3773.60 m², of which 1084.97 m² + 35.03 m² on ramp are below ground and above ground 2653.60 m². It is a building used for housing, storage and garage. The building is designed with a floor below ground and two floors above ground dwellings intended for use on indoor plant. The plant is intended to underground garage, storage rooms and common facilities. The ground, first and attic are for housing typology developed in one, two and three bedrooms.

ARCHITECTS and ENGINEERING:
Alfredo de Noriega Hertfelder
José- Ignacio Manresa Boltain
Alvaro Morán Barranco
YAEGER & JORDAN
PROPERTY: CEC group





YAEGER JORDAN
architects + engineers



Apartment building
c/ Balmes 3-A. MADRID
Budget: 2.4 M€
Timeframe: 12 months
Property: BALAFOR

cec

CONSTRUCCIONES CEC, S.A.

Apartment building, commercials and garage

c/ Palos de la frontera 24. MADRID

Budget: 4.5 M€

Timeframe: 16 months

Property: AZATA

WAEGER JORDAN
architects • engineers

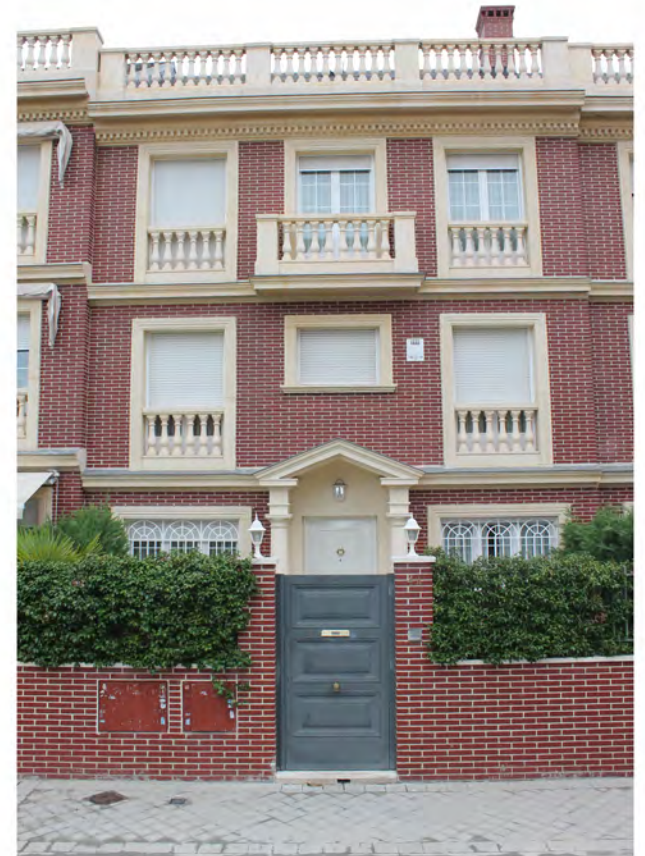




YAEGER JORDAN
architects · engineers

Construction of 12 luxury villas, garages,
storage areas and urbanization

c/ Mario Recuerdo. Puerta de Hierro. MADRID
Budget: 3.6 M€
Timeframe: 18 months
Property: ONIX



cec

CONSTRUCCIONES CEC-TRONCA, S.A.

YAREGER JORDAN
architects · engineers



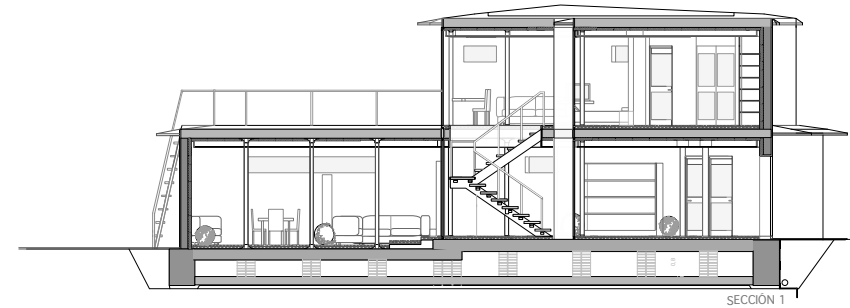
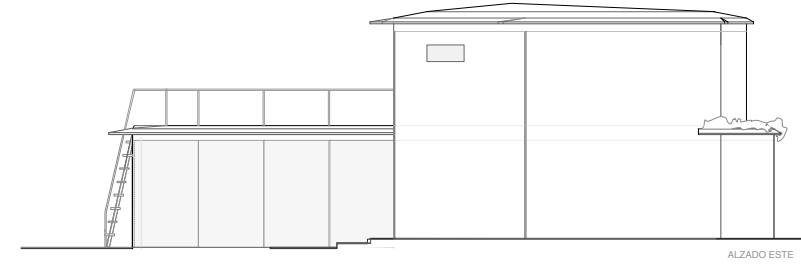
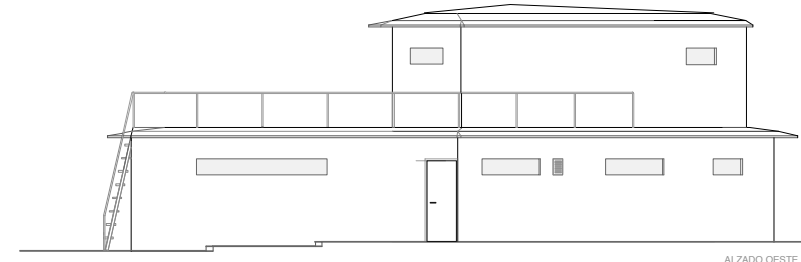
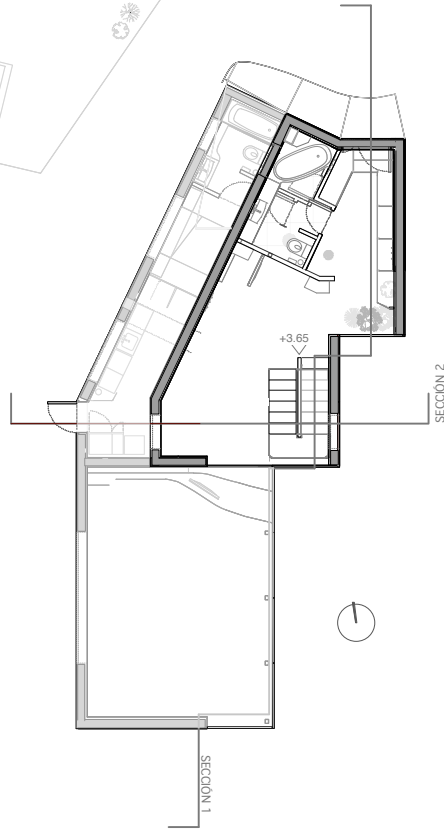
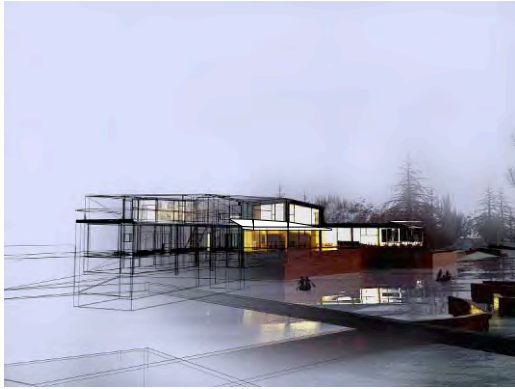
OFFICE BUILDING AND COMMERCIAL
c/ Madrid 29, Getafe (Madrid)
Budget: 4.2 M€
Timeframe: 12 months
Property: SALINES S.A.





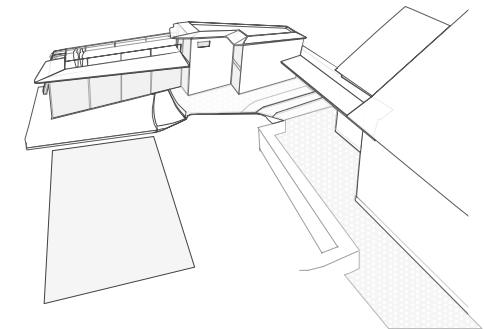
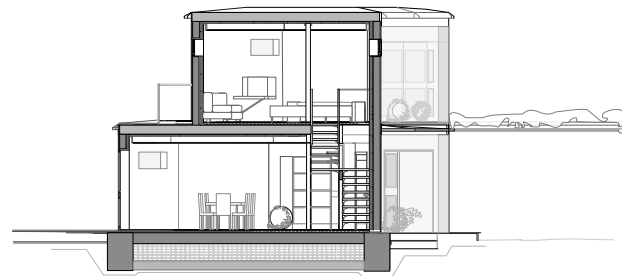
LIVING VILLA IN BOADILLA, MADRID SPAIN

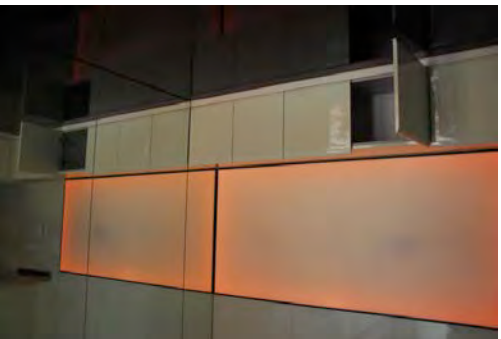
A new small villa in the north west of madrid.



ARCHITECTS
YAEGER & JORDAN
PROPERTY: F. SAINZ
TIMELINE: 2008
BUDGET: 740,200 euros

This project consists of the existing housing reform in the plot currently expanding this through a new body independent of the existing built will be built with the former by a continuity of slate flooring around the building and through physical union porch roof as a link between bodies.





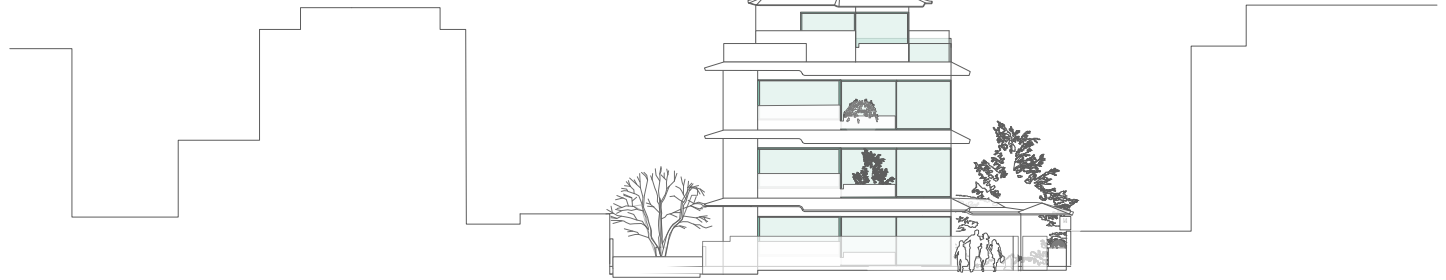
Lofts in "Puerta de Hierro" Madrid.

"Loft" on two levels located in the pedestrian square that comes from the street San Martin de Porres in Madrid.

This is an old commercial large transformed into three luxury lofts built dream qualities (not used in common construction).

QUALITY INTERIOR: Vertical surfaces in lacquered white baked. Floating anti-moisture and anti-scratch white. Stretch ceilings reflective black PVC anti-moisture and anti-noise Resyrok house. Kitchen painted white with stainless steel rod protected. BOSCH stainless steel appliances. Facade based security horizontal aluminum-steel plates Aluminum-steel carpentry with double glazing. Air Conditioning. Sanitary design in black with mahogany cabinets and Jacuzzi Tub. Halogen lighting throughout the apartment. Vertical panels and decorative lighting LEDs based on the entire range with programming in intensity and color. Batteries electrical outlets, telephone, TV and broadband. Alarm system with direct connection to central. Interior communication ladder structure and stainless steel railing pelda leado transparent bulletproof glass. Fitted with custom layout and design to ensure maximum use, interior finish has. White tempered glass doors with aluminum frame.

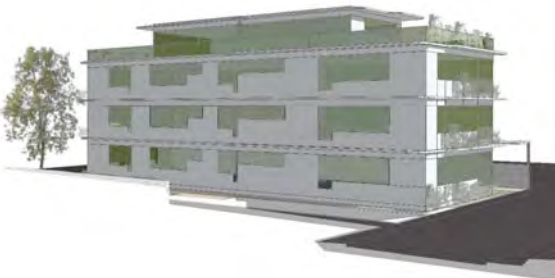
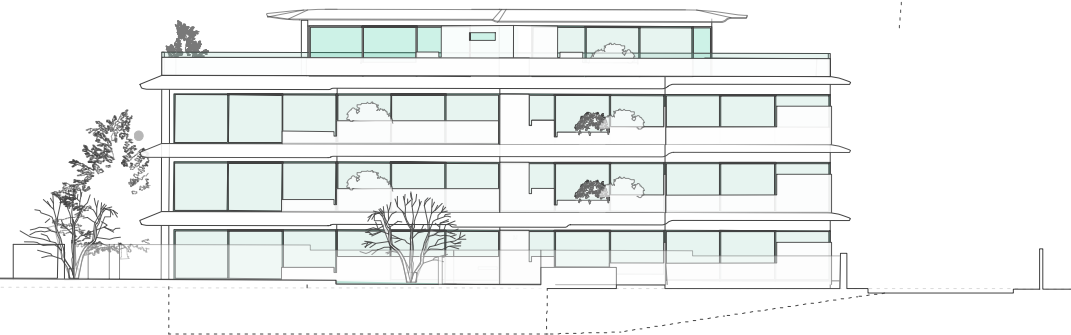
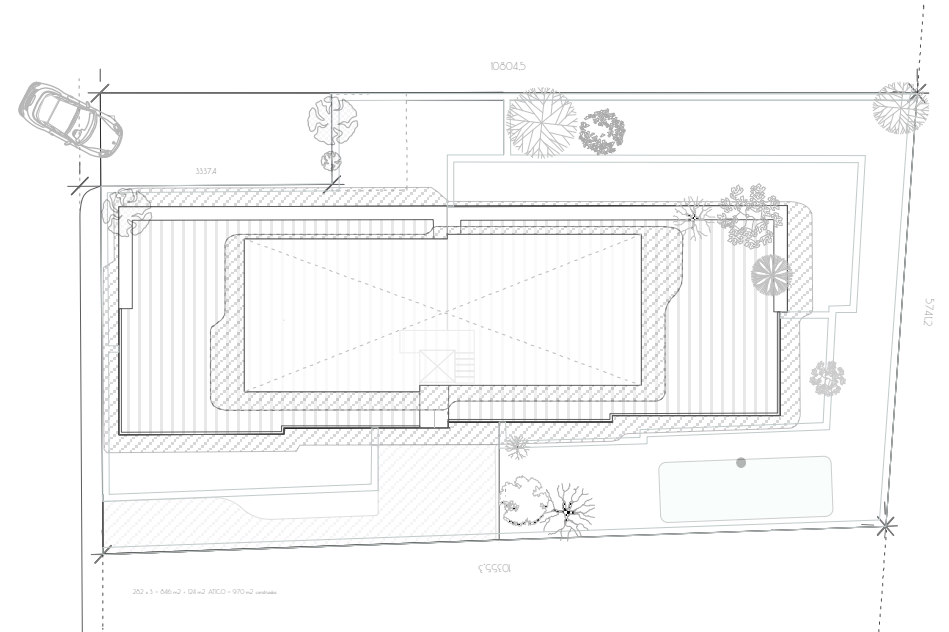
DESIGNERS OFFICES IN MADRID.
 ARCHITECTS: Y&J
 TIMELINE : 2006, Duration 4 months



**DRAFT, BUILDING BLOCK FOR
PREVIOUS STUDIES OPEN HOUSES IN C
/ ALFONSO VIII No 14. MADRID**

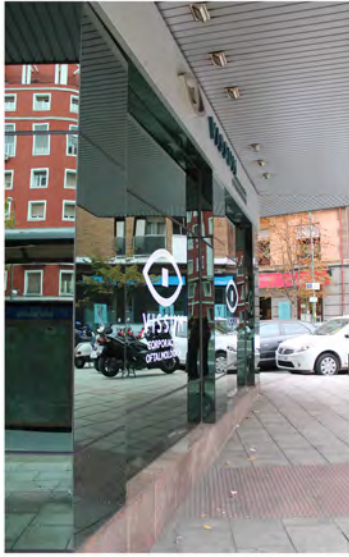
Luxury houses contest in
the Street King Alfonso
VIII n 14 of Madrid.

ARCHITECTS
YAEGER & JORDAN
PROPERTY: BBVA
TIMELINE: 2013 Duration 6 Months
BUDGET: 5,020,040 euros





WAEDER JORDAN
architects + engineers



OPHTHALMOLOGIST CLINIC
c/ Francisco Silvela 27. MADRID
Budget: 3.3 M€
Timeframe: 10 months
Property: VISSUM



Restoration Buildings Projects

YAEGER & JORDAN

architects + engineers

C/ General Prim 13 28004 Madrid
C/ Principe de Viana 11 28023 Madrid
C.I.F. 684138981

CONSTRUCTION BY:



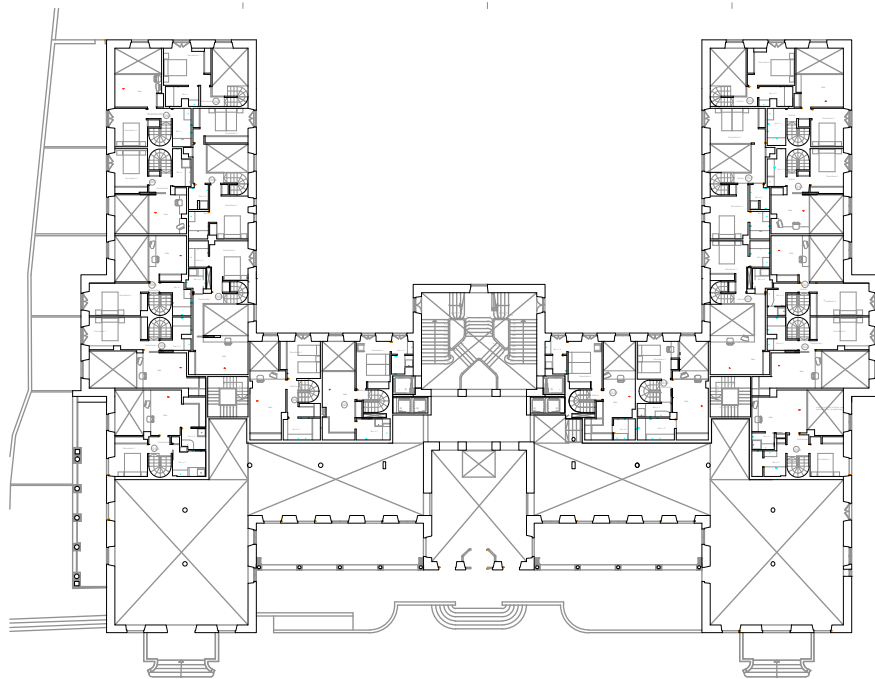
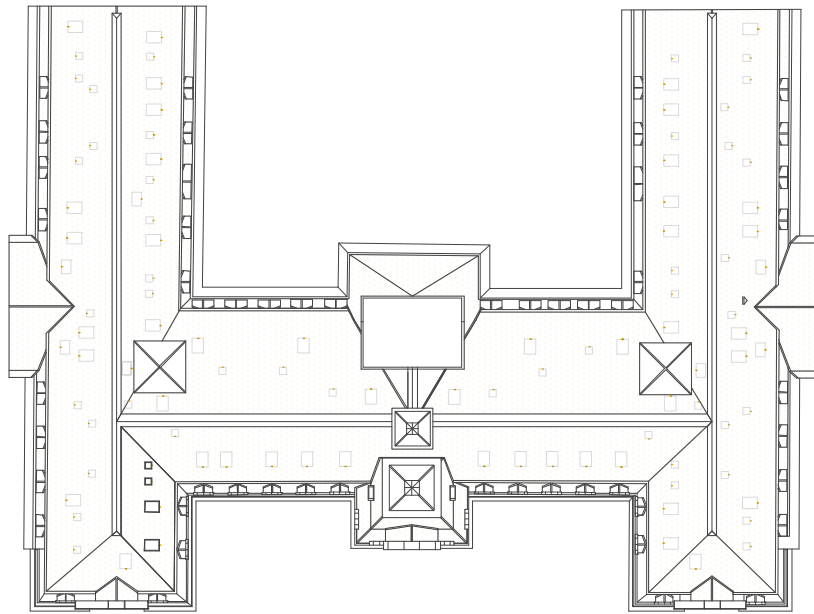
GRAND HOTEL MONDARIZ BALNEARIO (SPA). PONTEVEDRA. GALICIA

OWNER since 1873: Hermanos Peinador.
ARCHITECT and ENGINEERING :
YAEGER & JORDAN SL, José Ignacio Manresa Bollain
MAIN CONTRACTOR: CONSTRUCCIONES CEC-trebol SA.

Y&J also specialized in the field of
restoration, rehabilitation and expansion
of existing buildings.

* Grand Hotel Rehabilitation and
Construction of 124 luxury apartments,
124 parking spaces and infrastructure
works and landscaping. Enrique Peinador
ave, s / n. Mondariz Spa (Pontevedra)
Budget: 27.2 M Term: 22 months.

* Extension of the Gran Hotel Balneario
and Construction of Water Palace Ave
Peinador Henry, s / n. Mondariz Spa
(Pontevedra) Budget: 25.8 M Term: 20
months.







The Mondariz Spa has 194 rooms fully equipped and elegantly decorated, creating a comfortable and relaxed atmosphere.

The complex is divided into three historic buildings that combine tradition with modern technology.





ROOMS:

- Free WIFI
- Canal Satellite
- Hairdryer
- Air conditioning
- Safety rooms
- Minibar
- Room Service
- Pillow

HOTEL:

- Free WIFI
- Mondariz Fitness Sport Club
- Sauna
- Free Outdoor Swimming Pools
- Shop
- Laundry service
- private Garage
- Free Kids Club mondariz
- Restaurants
- Coffee Shops

RESTORATION OF RESIDENCIAL OLD BUILDING IN MADRID. C/ Lagasca 121

ARCHITECTS and ENGINEERING and MANAGEMENT:

Jorge San José Testa

Ignacio-José Manresa Actores

YAEGER & JORDAN

PROPERTY: Comunidad De Propietarios Lagasca 121

TIMELINE: 2012, 9 Months

BUDGET: 1,2 M

The building is habitable and is being used continuously since the first half of the twentieth century, since 1915.

It is listed by the General Urban Plan of Madrid the year 1997, (hereinafter P60UM97) with Level 3 Standards NZ 1 Grade 3o (subject to the rules of historical of the city of Madrid) so that the facade the building is set up as an element subjected to protection.



- LEYENDA PATOLOGÍAS
- P1 DESPRENDIMIENTOS
 - P2 DESCONCHADOS
 - P3 GRIETAS / FISURAS
 - P4 FILTRACIONES HUMEDADES Y GOTERAS
- * NOTA: NO SE DEFINE GRÁFICAMENTE LA SUCIEDAD PUES SE CONSIDERA UNA PATOLOGÍA GENERALIZADA SE ACTUARA CON LIMPIEZA EN FACHADA Y PINTURA EN TONO EXISTENTE HUESO REF PANTONE 960 C. CON EMBOCADURAS EN BLANCO. VER PLIEGO Y MEDICIONES PARA MAS DETALLE DE MATERIALES.

* NOTA: VER ANEXO FOTOGRAFICO PARA MAYOR DETALLE (PLANTAS SUPERIORES Y PRIMERA MAS AFECTADAS, FACHADA SUR LIGERAMENTE MAS DAÑADA QUE LA ESTE).

* NOTA: SE ADIENDA NORMATIVA DE PLANEAMIENTO EN CUANTO A LOS LOCALES EN PLANTA BAJA.



FIRMAS: en Madrid, Marzo de 2011

ARQUITECTO:
D. José Ignacio Manresa Bollaín
Número de habilitación del C.O.A.M. 4247.

LA PROPIEDAD AUTORA DEL ENCARGO O REPRESENTANTE:
D. Álvaro Aguilar Gómez Acebo con N.I.F.- 33.308.763-V

D. Juan Bayón Mingo con N.I.F.- 1.279.483-Q

Interviniendo en representación de: Comunidad de Propietarios de la C/ Lagasca 121.
N.I.F.- 6-78.077-476. Domiciliada en la C/ Lagasca nº 121 28.006 Madrid

P7. ESTUDIO DE PATOLOGÍAS, ALZADO ESTE.
escala e. 1:150

PROYECTO DE REHABILITACIÓN EN FACHADAS
CALLE LAGASCA Nº 121, MADRID.
AUTORA DEL ENCARGO: comunidad de propietarios Lagasca nº 121.



BUILDING CHARACTERISTICS

The building is located at the heart of Madrid's city centre, on 8 Tirso de Molina Street, in the downtown neighbourhood of Lavapiés. It has an overall built surface of 2911 m² according to property register (3405 m² including underground and installation surfaces) for a useful surface of 2700 m² according to the building plans.

The building is classified as residential and institutional on the ground floor, being suitable for the intended purposes.

Also, buildings of this size are very rare and difficult to find in Madrid's city centre. The building is free and suitable for the intended construction, precisely in the neighbourhood with the highest concentration of Muslim community population in Madrid.

RECORD OF ACTIONS UP TO PRESENT

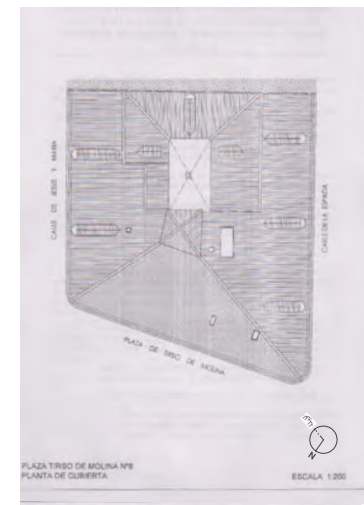
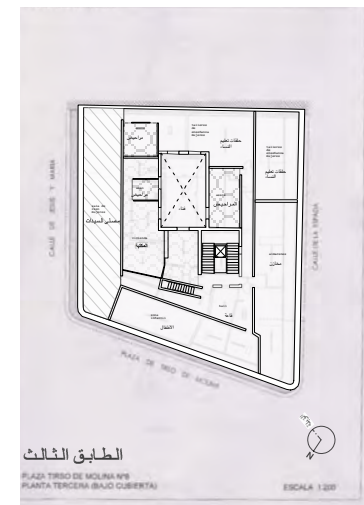
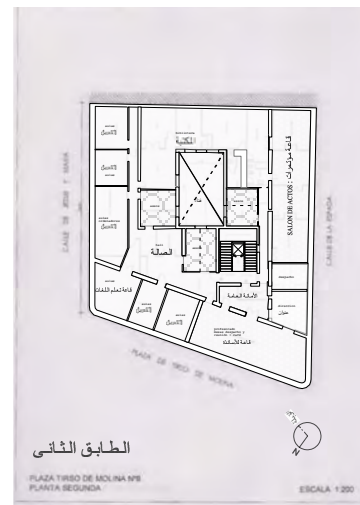
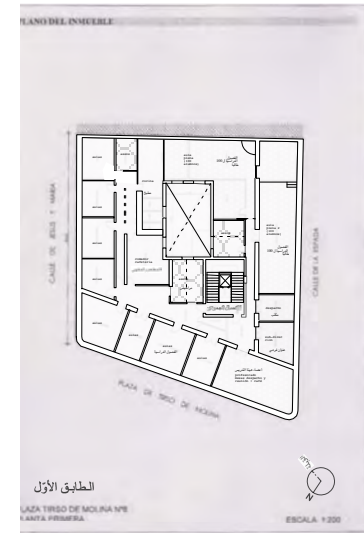
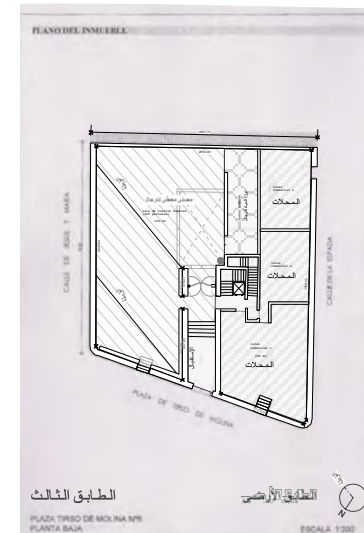
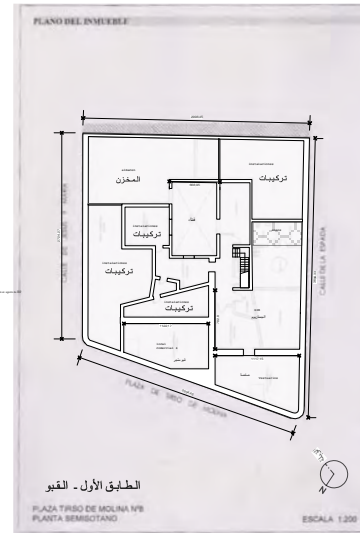
November 2010: Madrid's Islamic Cultural Association for Culture and Peace contacted the following companies (sorted by chronological order): Inmobiliaria CEC-TREBOL, S.A building company, Merelo & Pappenheim, Lawyers.

Yaeger & Jordan S.L. Architects.FP ASOCIADOS, Urban-Planning Lawyers.

A few months later, they encouraged to launch the project aimed at reforming and restoring the building with the purpose of turning it into an institutional Islamic School.

In parallel to the architectural project, we started negotiations to acquire the building in the best possible terms and price. A initial offer of 3.4 M€ have been accepted.

645 m² CONSTRUIDOS POR PLANTA و 645 متر مربع بناء و
 520 m² UTILES POR PLANTA 520 متر مربع للمصنع مفيدة
 SOBRE PLANTAS: مجموع متر خطة:
 3225 m² CONSTRUIDOS + 180 m² cons de TORREÓN = 3405 m² cons
 3225 متر + 180 متر بنيت بنيت لتوريون بنى = 3405 متر
 2550 m² UTILES + 150 UTILES DE TORREÓN = 2700 m²
 2700 لقطات مربع + 150 لقطات مربع من المساحة القابلة للاستخدام لتوريون =



ملخص



RESTORATION AND CHANGE OF USE OF BUILDING
 IN MADRID FOR ISLAMIC SCHOOL
 C/ Tirso de Molina 8



School and University buildings

YAEGER & JORDAN

architects + engineers

C/ General Prim 13 28004 Madrid

C/ Principe de Viana 11 28023 Madrid

C.I.F. 684138981

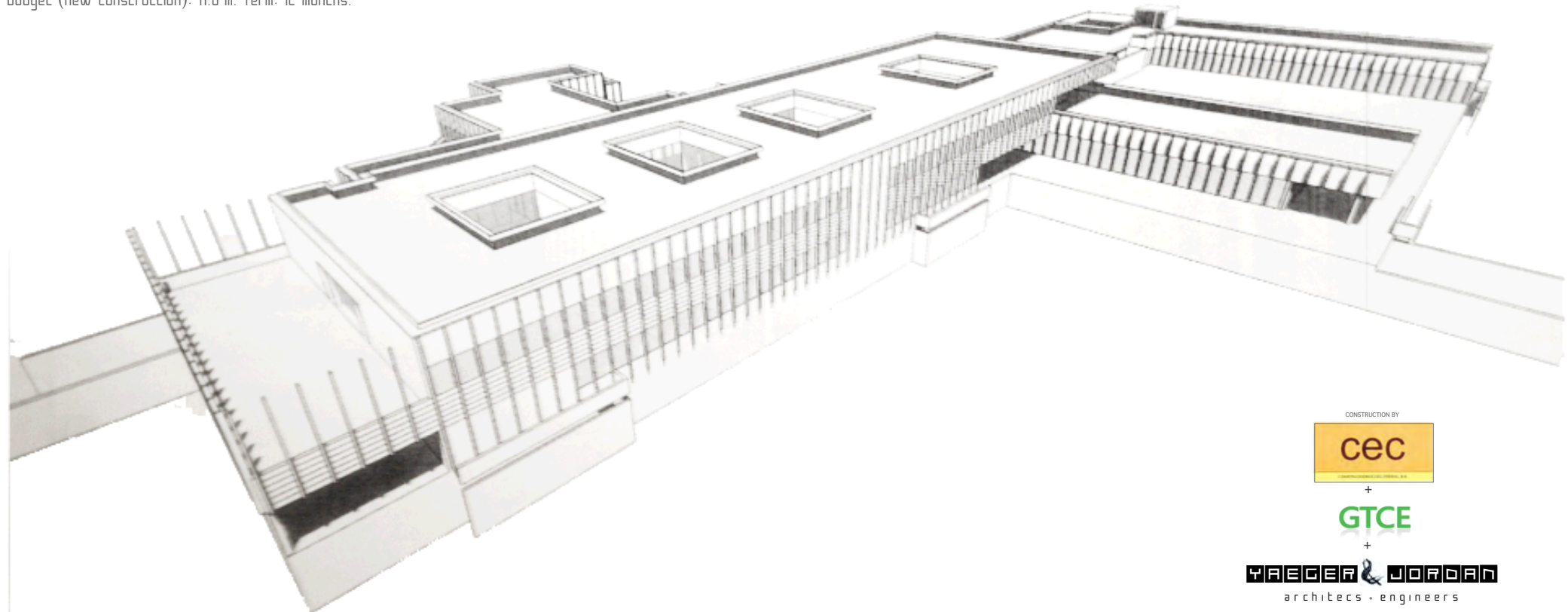


Aravaca, Madrid / University campus La Salle-Aravaca

The building is situated around a cloister which is the meeting place of the Campus. Three of its sides are closed and the fourth is built around a wood. Landscaped roofs, two long arms that accommodate the change in elevation and sew the new buildings to the old. A rehabilitation centre that overlooks the cloister and is structured around a number of light wells. A building that sits on the territory, accepting its topography and acting as a platform from which to look out at the landscape. A trans-ventilated and modulated brick façade that enables the reconfiguration and extension of the module...

YAEGER & JORDAN Jose Ignacio Manresa Bollaín
 AMPS ARQUITECTURA y DISEÑO Alberto Marcos Pablo Saiz STAUER
 PROYECTOS URBANOS S.L.
 Alberto Sanjurjo Julio Ceballos

* Faculty of Health Sciences, Campus Square, 200 parking spaces, urbanization and sports courts. C / La Salle, 8. Aravaca (Madrid)
 Budget (new construction): 11.6 M. Term: 12 months.



CONSTRUCTION BY



+

GTCE

+

YAEGER & JORDAN
 architects • engineers

“The environment teaches us”

“The path of education never ends. In a school, precinct, home or university, the essence of education is the same”. This project for the extension of the La Salle University Campus in Arava (Madrid) consists of several phases. The first phase, which is currently underway, involves the construction of the Faculty of Information Sciences and a Rehabilitation Centre that includes a hydrotherapy unit, gyms, occupational therapy centres, dentistry, physiotherapy, psychology, and so on. An Innovation Centre will be constructed during a second phase.

The project is based on three fundamental concepts: reduced impact on the territory through better integration and maximum energy efficiency (the building is in the process of obtaining LEED certification), universal access, and the promotion of meeting places between the different areas of use.

TECHNICAL BUILD MANAGER: YAEGER & JORDAN Jorge San Jose
TECHNICAL STRUCTURAL ANALYSIS: YAEGER & JORDAN S.L.
PROPERTY: La Salle Campus Madrid.



CONSTRUCTION BY



+

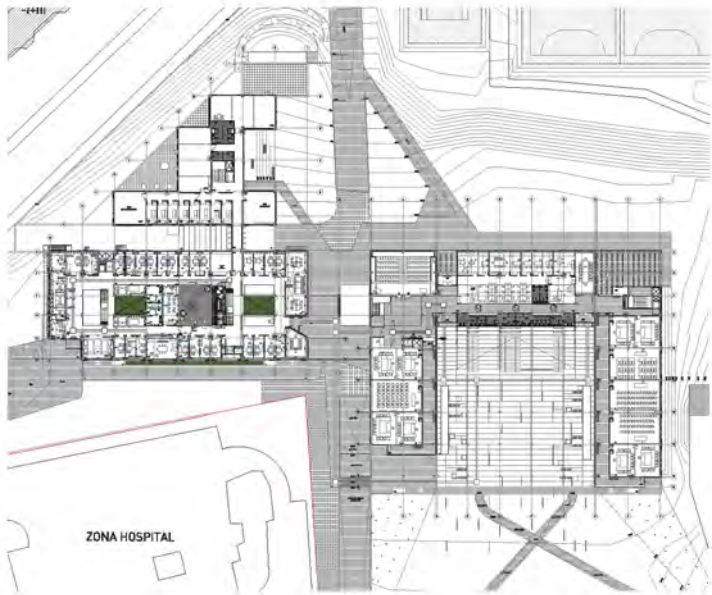
GTCE

+

YAEGER & JORDAN

architects • engineers





Pianta general cota inferiore



Pianta general cota superiore



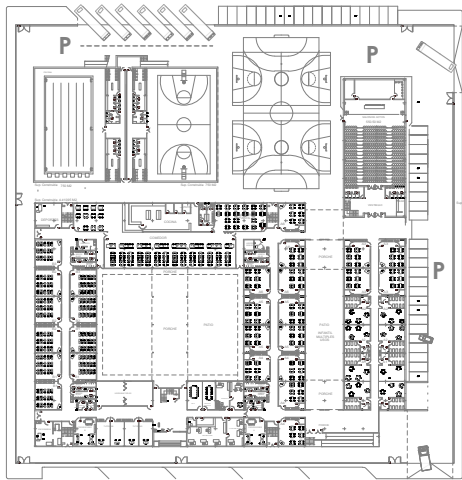
CONSTRUCTION BY
cec
CONTRAPPRESIONE CEC-TRONIC, S.p.A.

+

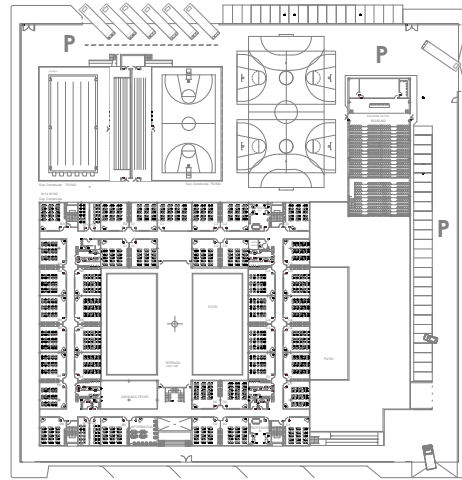
GTCE

+

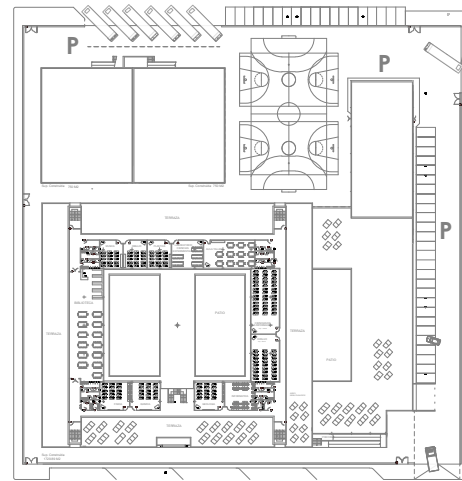
YAEGER & JORDAN
 architects . engineers



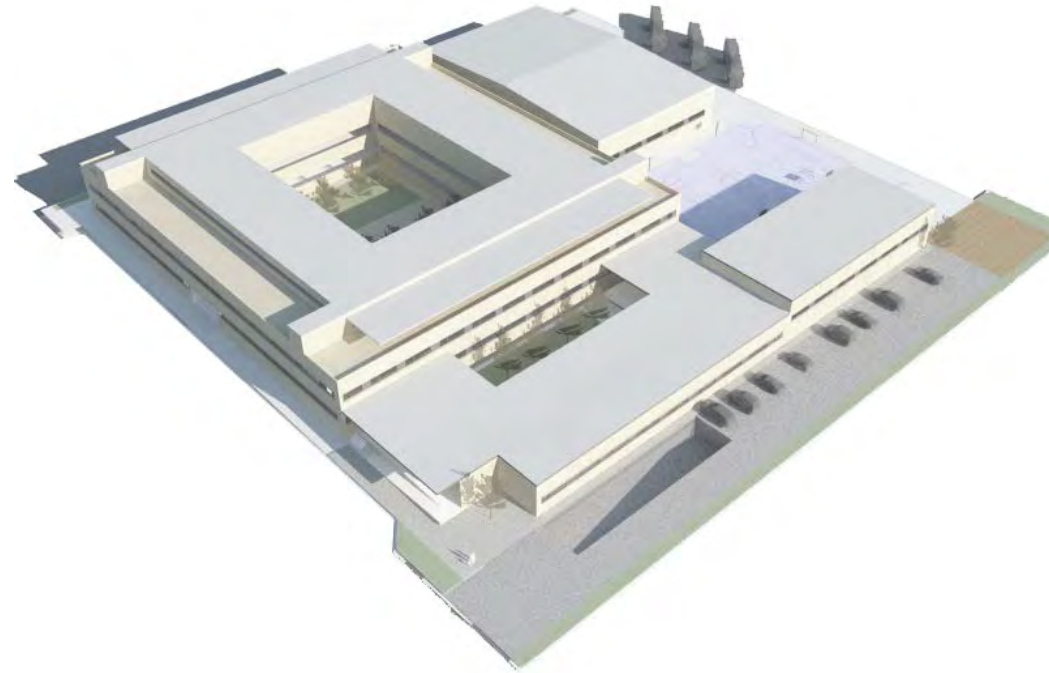
PLANTA BAJA



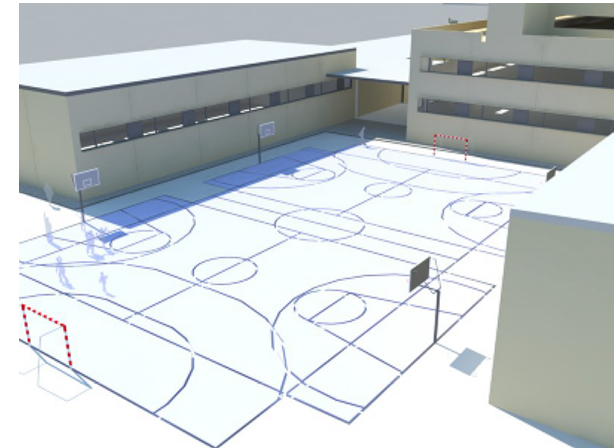
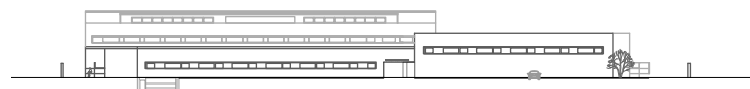
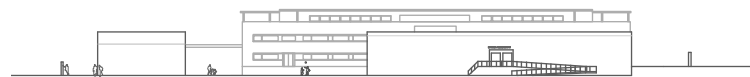
PLANTA PRIMERA



PLANTA SEGUNDA



PROJECT FOR "BRISTOL" SCHOOL IN VALDEBEBAS MADRID



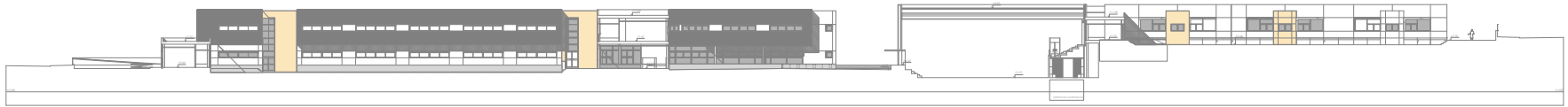
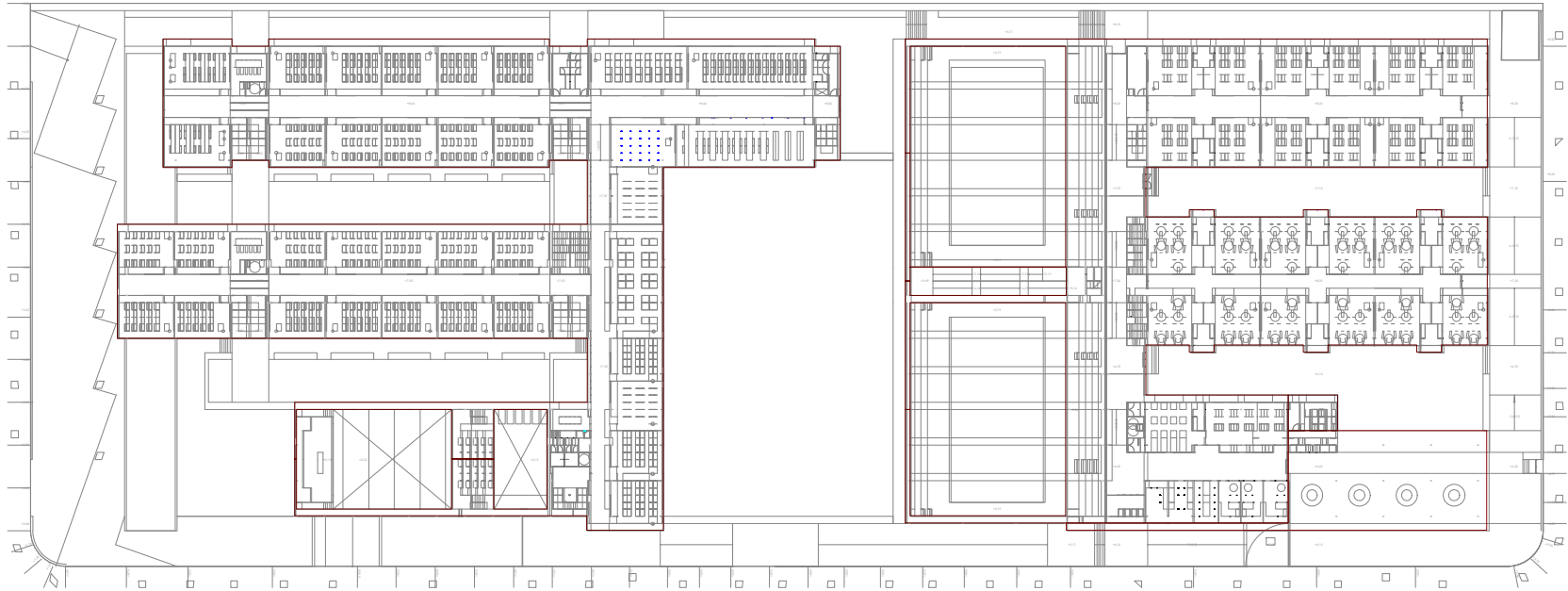
URBANISTIC PARAMETERS OF THE PLOT LOCATION
PLAN PARCIAL US 4.01. VALDEBEBAS MODIF 3a.
MANZANA 129 DOTACIONAL.
EQUIPAMIENTO AED LOCAL.

Colegio Concertado Superficie: 13.456 m²
Referencia catastral: 50006053HL1050N0001A6
Superficie construida total: 14.641m²
Superficie ocupada: 8.550m², 65%

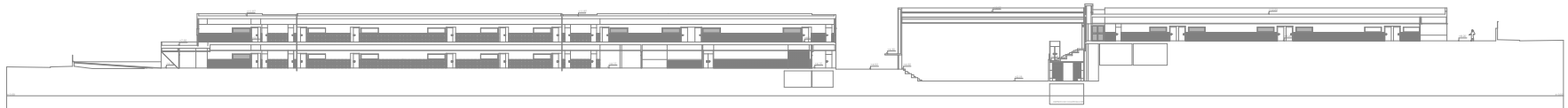
Quercus School (Boadilla del Monte)



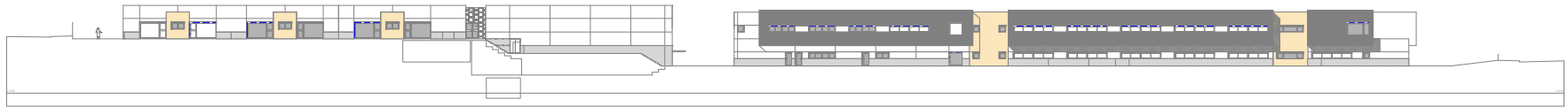
School, & faculty (4 lines), covered pavilion and swimming pool, sports courts and parking. C / Valle Inclán 12, Boadilla del Monte (Madrid)



ALZADO SECCION I DERECHA EL SUR (PLAZADO DEL MEDIO NOROCCIDENTE)



ALZADO SECCION I DERECHA EL SUR (PLAZADO MEDIO NOROCCIDENTE)



ALZADO I DERECHA EL NOROCCIDENTE

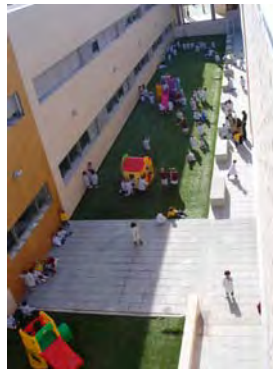
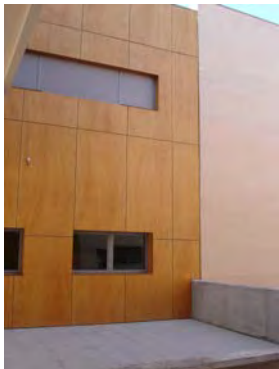


ARCHITECTS: YAEGER & JORDAN
TECHNICAL ENGINEERING: J. SAN JOSE A. MORAN
PROPERTY: ALFEDEL S.A., COLEGIO QUERCUS
TIMELINE: 2007 Term: 18 months.
BUDGET: Budget: 17.8 m

YAEGER & JORDAN
architects • engineers



CONSTRUCTION BY:



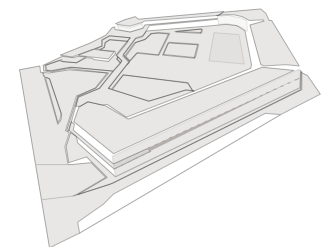
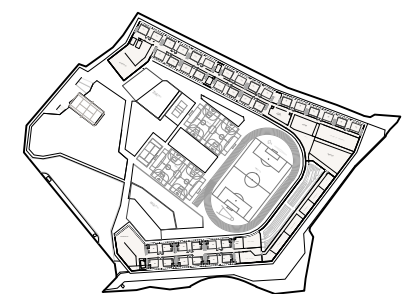
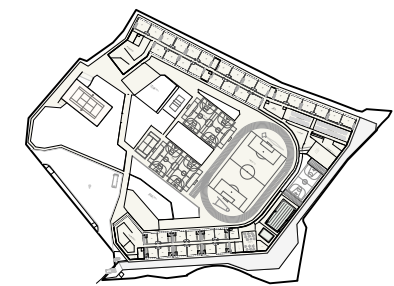
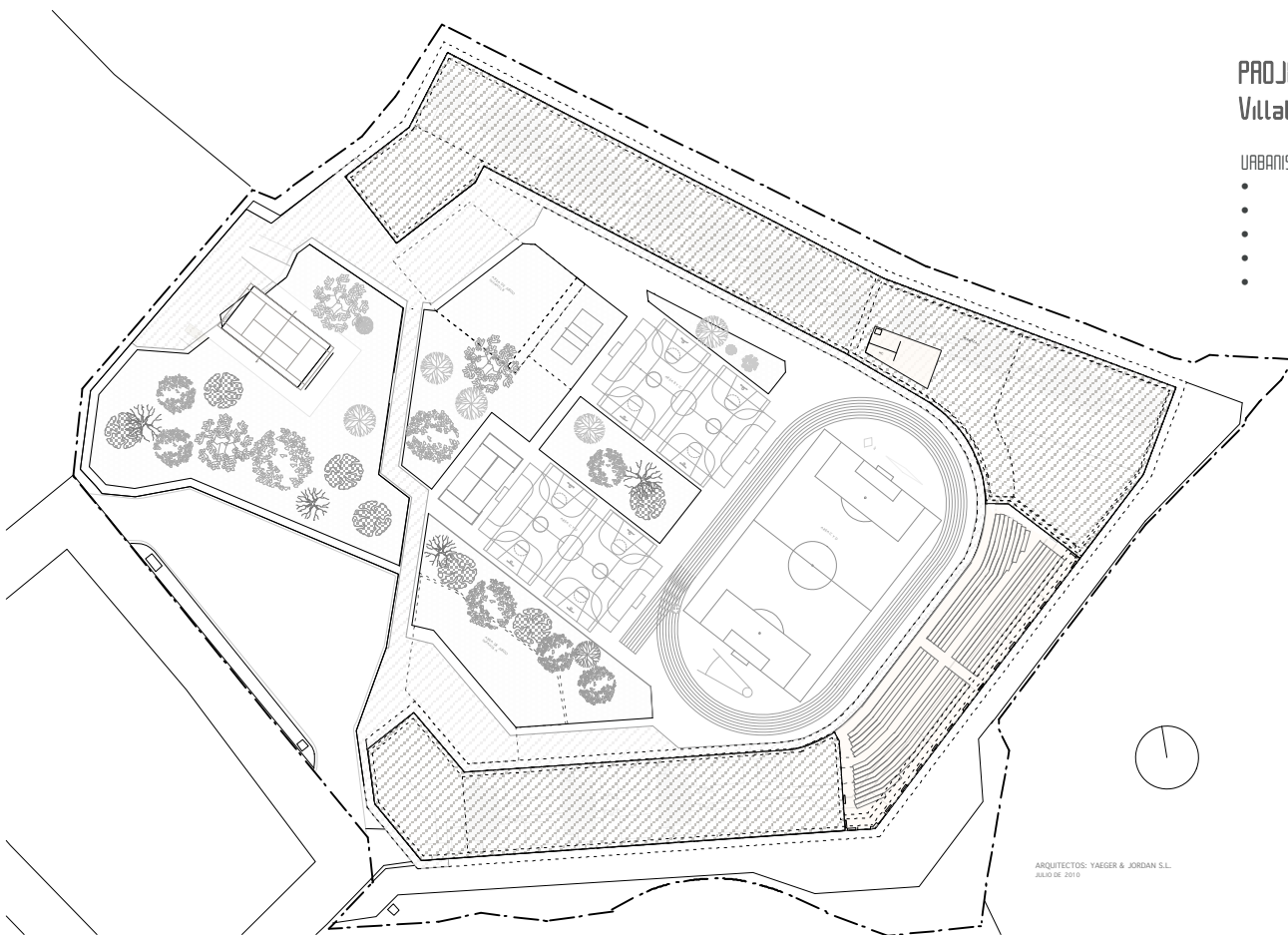
**PROJECT FOR SPORTS SCHOOL In Collado
Villalba. North west of Madrid.**

CONSTRUCTION BY:

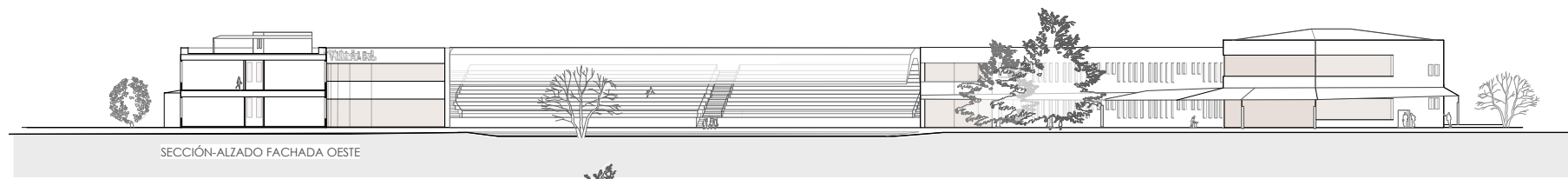


URBANISTIC DATA

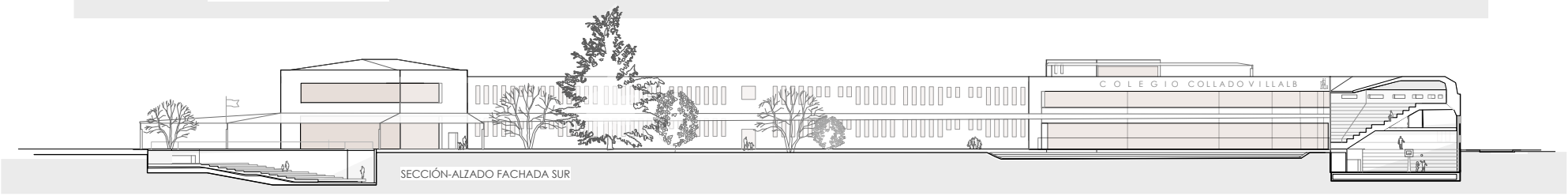
- Location: UA 1-4 La Huerta 13, Collado Villalba (Madrid)
- Superf.: 36.123M²
- Referencia catastral: 60006903VL1060N0001AZ
- Superf. contracted: 16.890 M²c
- Superf. ocupation: 9.246 M²s



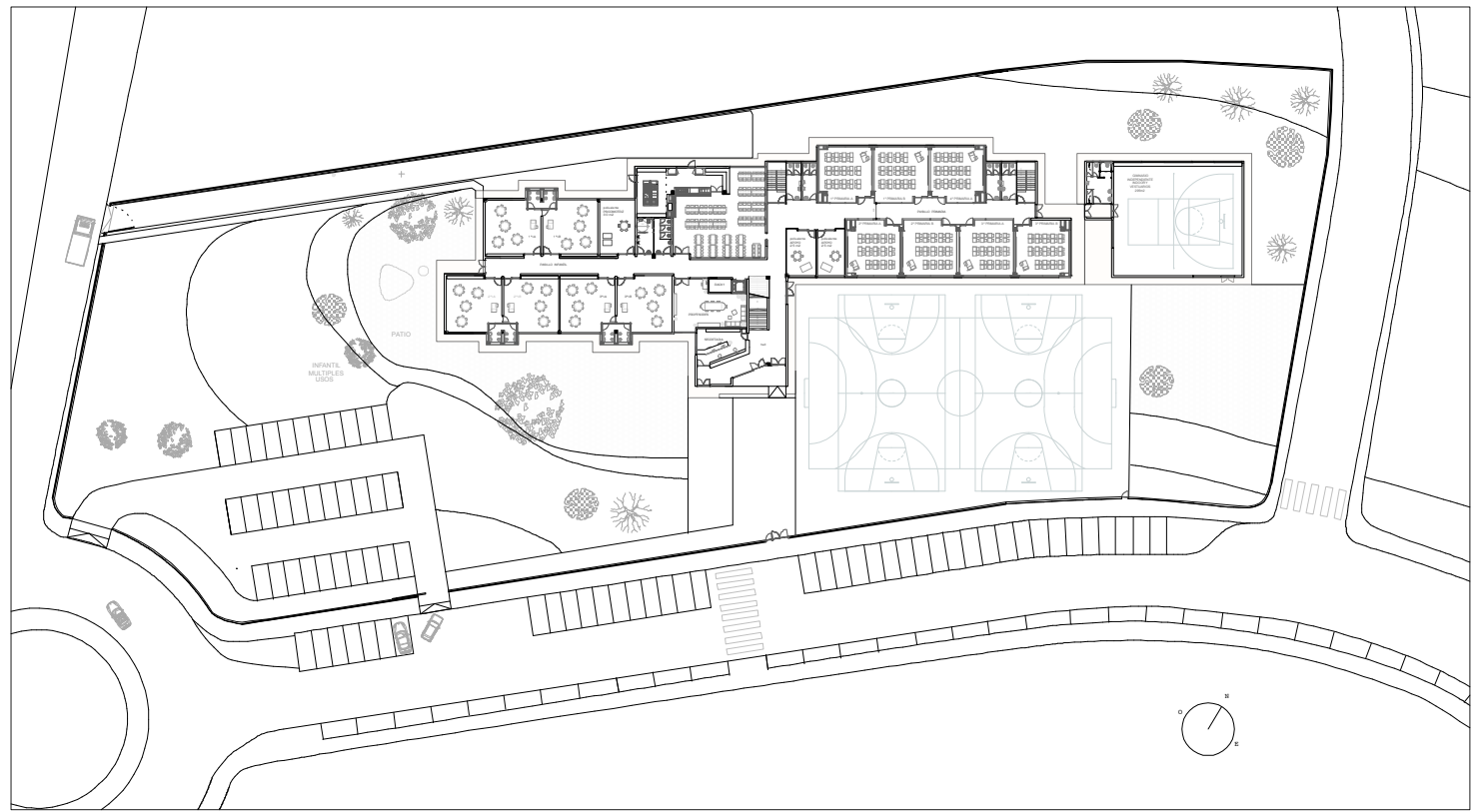
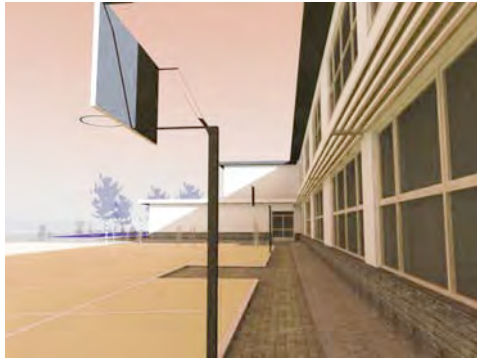
ARQUITECTOS: YAEGER & JORDAN S.L.
AJOLO DE 2010



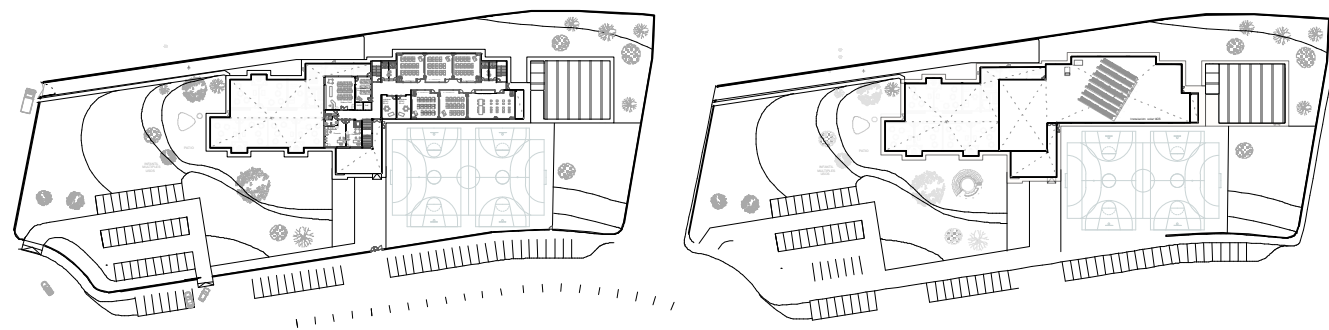
SECCIÓN-ALZADO FACHADA OESTE



SECCIÓN-ALZADO FACHADA SUR

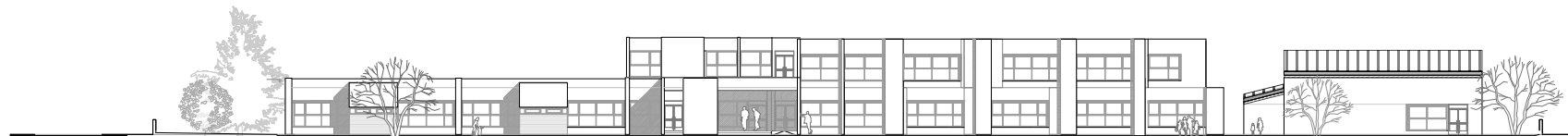


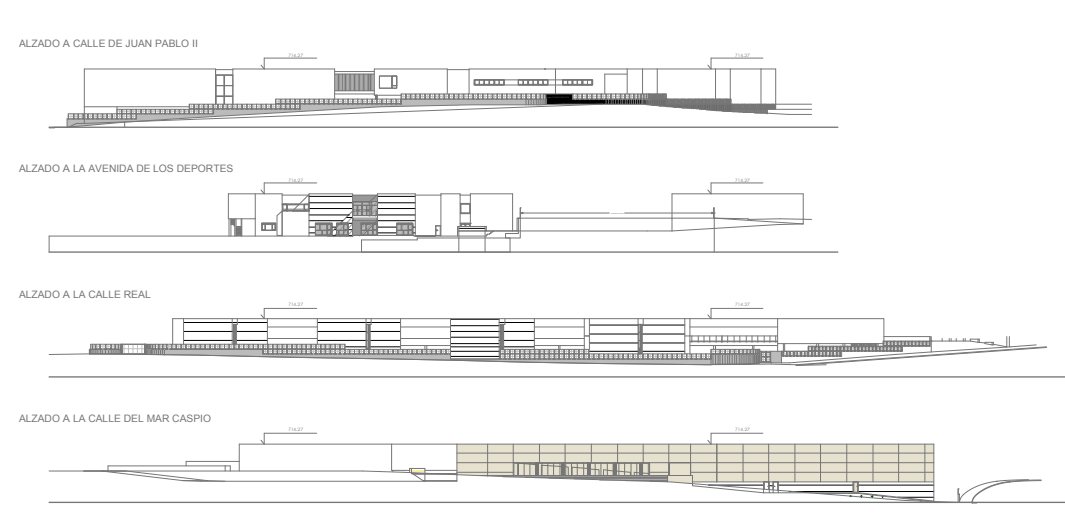
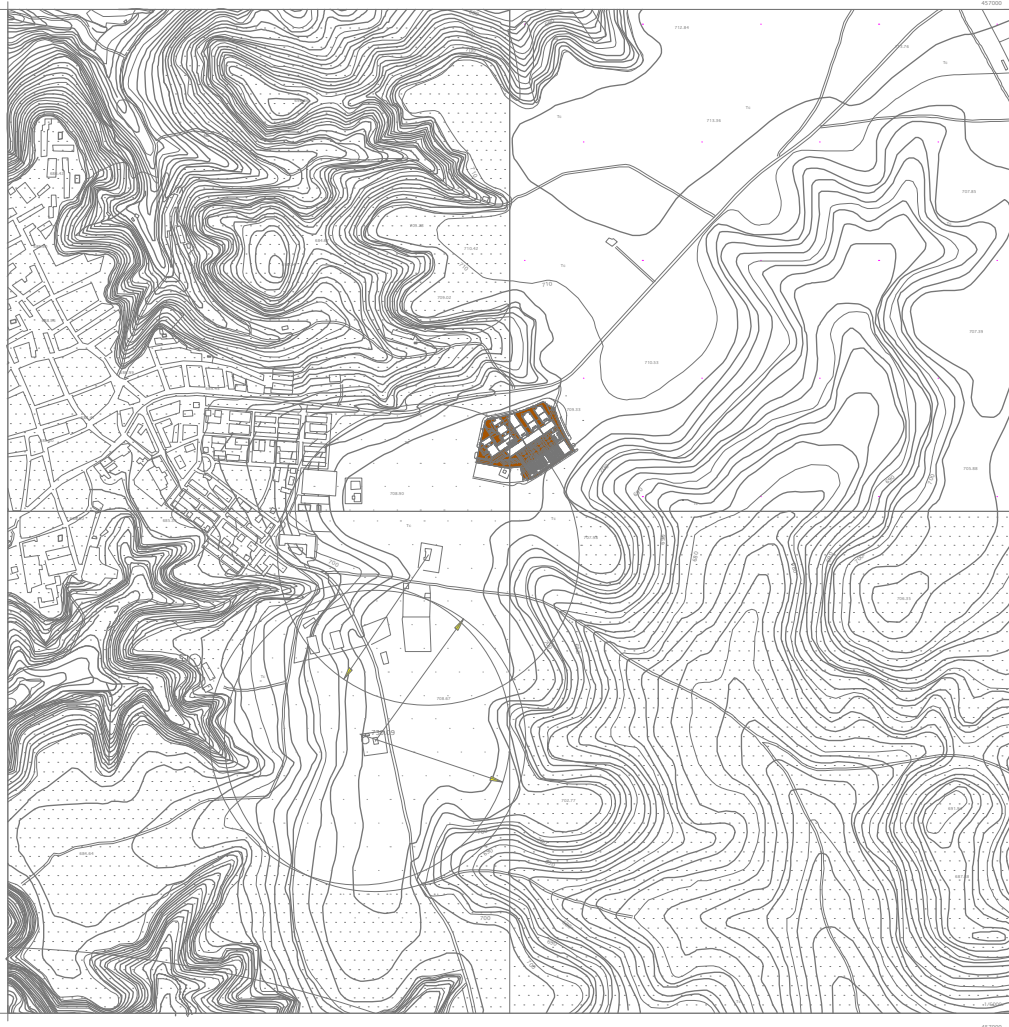
PROJECT FOR SCHOOL "Nueva Divina Pastora" in Manzanares, CASTILLA LA MANCHA.



URBANISTIC PARAMETERS OF THE PLOT LOCATION

- Ref. catastral: 7379406VJ6178N0001F
- CL SECTORES ZU-1-2 41 Suelo
- AREA REPARTO 14 RESULT 41
- 13200 MANZANARES CIUDAD REAL
- Superficie: 9.206 m²
- Superficie construida total: 2824m²
- Superficie ocupada: 1850 m² 20%





1/500



Colegio Miramadrid (Paracuellos del Jarama) Madrid.

The Centre has built on a plot 14.000m² of 22598.32 m²

Architects and Engineers: YAEGER & JORDAN S.L.
 School, & faculty (4 lines), covered pavilion and swimming pool,
 sports courts and parking. John Paul II Ave, s / n Paracuellos del
 Jarama (Madrid) Budget: 23 M. Term: 18 months.

EDUCATIONAL PROGRAM BY:



CONSTRUCTION BY:



EDUCATIONAL PROGRAM BY:



CONSTRUCTION BY:



1/500

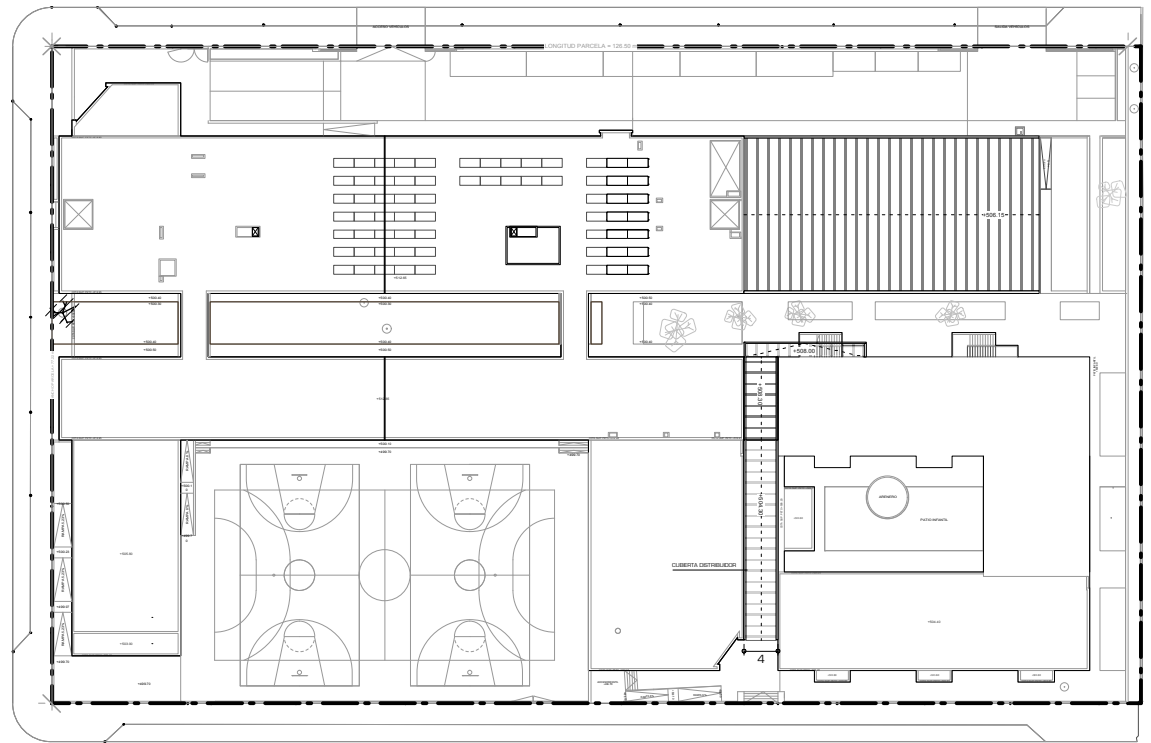
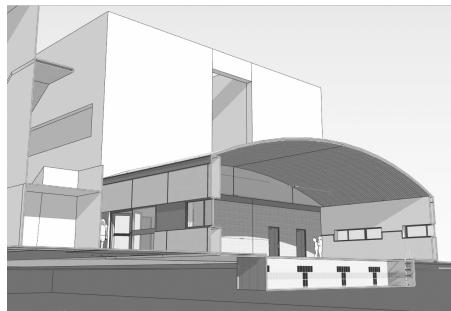
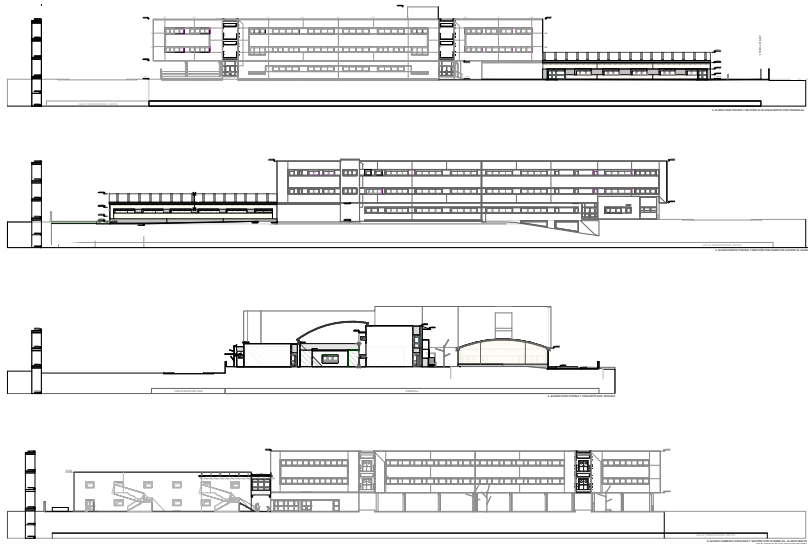
FACILITIES

The building is equipped with the following classes:

- multimedia classrooms
- Classroom support and / or splitting
- Drawing Classroom
- Plastic Classroom
- Audiovisual Classroom
- Music rooms
- Physical Laboratory

- Chemistry Laboratory
- Tech Lab
- Laboratory biology and geology
- sports Centre
- Sports courts
- indoor swimming pools
- Rooms psychomotor
- Multipurpose Classrooms
- Assembly hall
- Dining





Colegio Villamadrid (Villaverde).

Nursery school, faculty, (3 lines), covered pavilion and swimming pool, sports courts and parking. C / Intermedate Transverse south sixth and Southern Boulevard. Villaverde (Madrid) Budget: 15.5 M. Term: 16 months



CONSTRUCTION BY:



EDUCATIONAL PLAN BY:





CONSTRUCTION BY:



EDUCATIONAL PLAN BY:



It is a separate building, 3 storeys in height above ground and below ground. The twin of the different volumes is considered the key to the configuration of the building, connecting the different elements each function of its use, and for creating outdoor spaces to playgrounds, gardens and outdoor parking.

- 1 line of First Cycle of Early Childhood Education,
 - 3 lines of the Second Cycle Education, Primary and Secondary Local also includes Body, Salon de Actos, Kitchen and Dining and Dressing
- Outdoor spaces Conditioning Sports Fields, Play Areas,
Outside Garden, bus and passenger car.

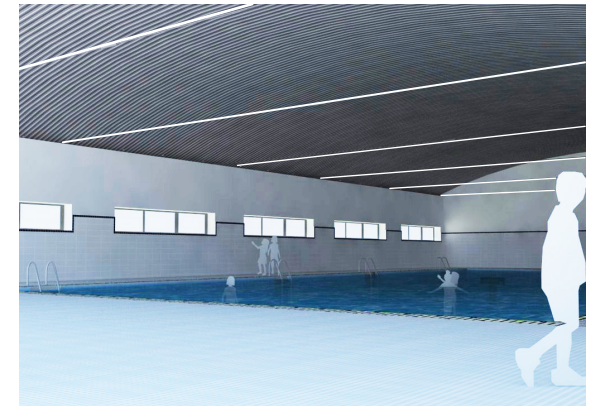


CONSTRUCTION BY:

cec

CONSTRUCCIONES CEC-FREBO, S.A.

EDUCATIONAL PLAN BY:



Governmental and Public Building Projects

YAEGER & JORDAN

architects + engineers

C/ General Prim 13 28004 Madrid
C/ Principe de Viana 11 28023 Madrid
C.I.F. 68438981

COURTS BUILDING of Fuenlabrada C/ Romania, Budget: 7.5 M Term: 18 months.

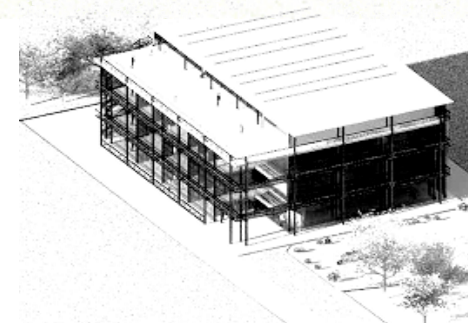
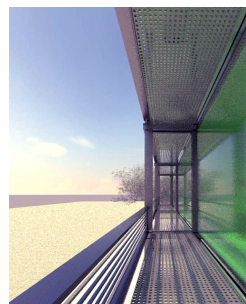
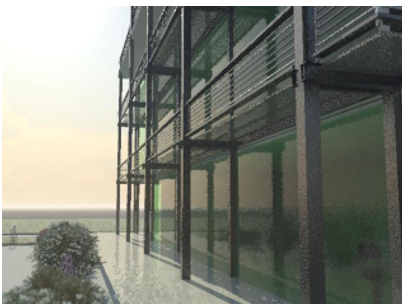
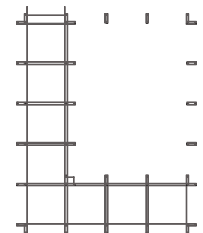
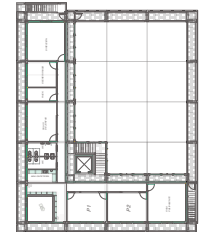
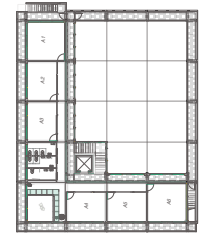
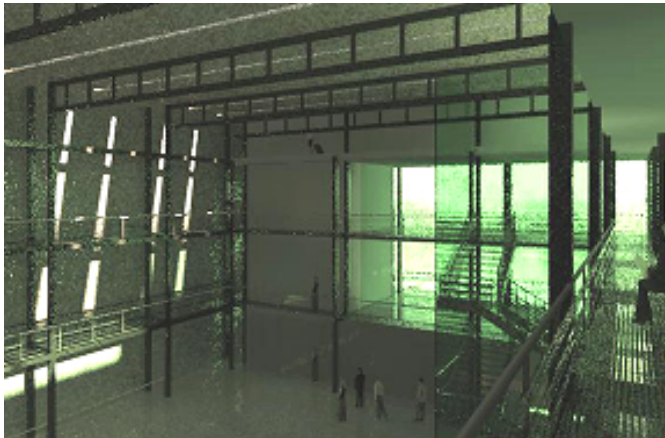
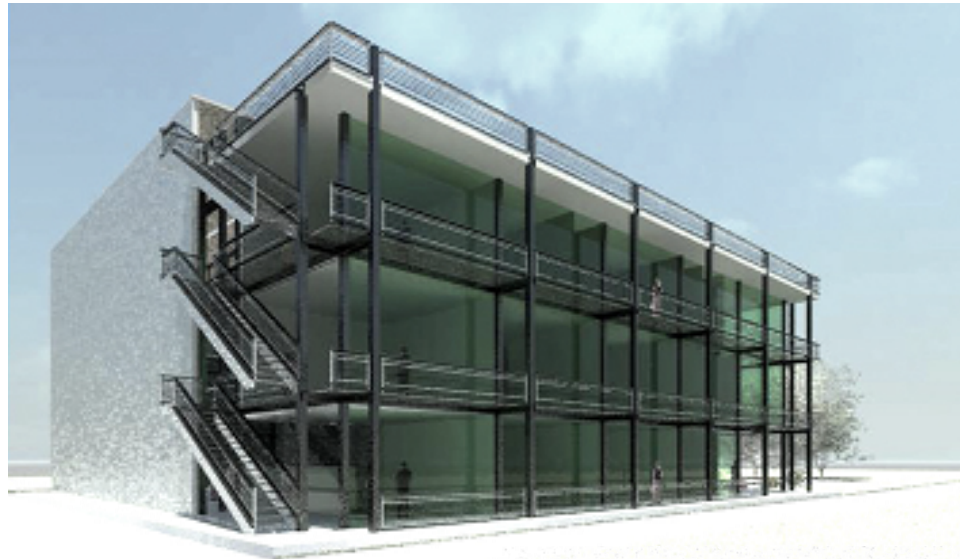
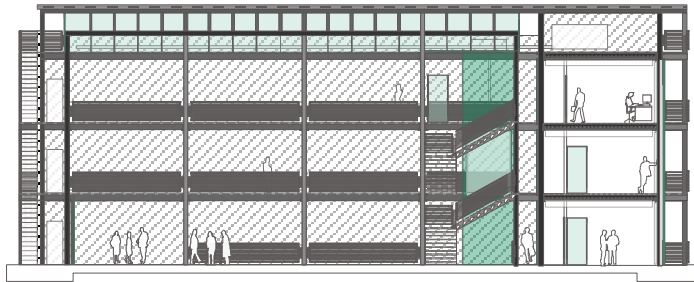
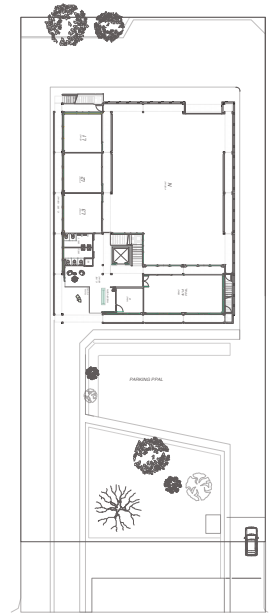
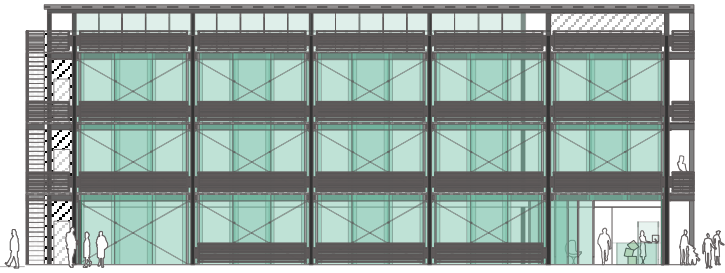
ARCHITECTS and ENGINEERING:
José- Ignacio Manresa Bollain
Jorge San José Testa

YAEGER & JORDAN

PROPERTY: Madrid City Council.

Public Contest won by Yaeger and Jordan (CEC group) team of architects in 2004





Energy excellence building. Tecnogetafe. Madrid 2011

Building a center of excellence for sustainability and renewable energy. 2420 m² c 9840 m²s
 It is al design in steel and modulated to be constructed in short period.

ARCHITECTS and ENGINEERS: YAEGER & JORDAN S.L.
 PROPERTY: Tecno-Getafe
 TIMELINE: 2009-2011
 BUDGET: 18,840,900 euros



VISITORS CENTER. Isla Cristina (Huelva) 2013

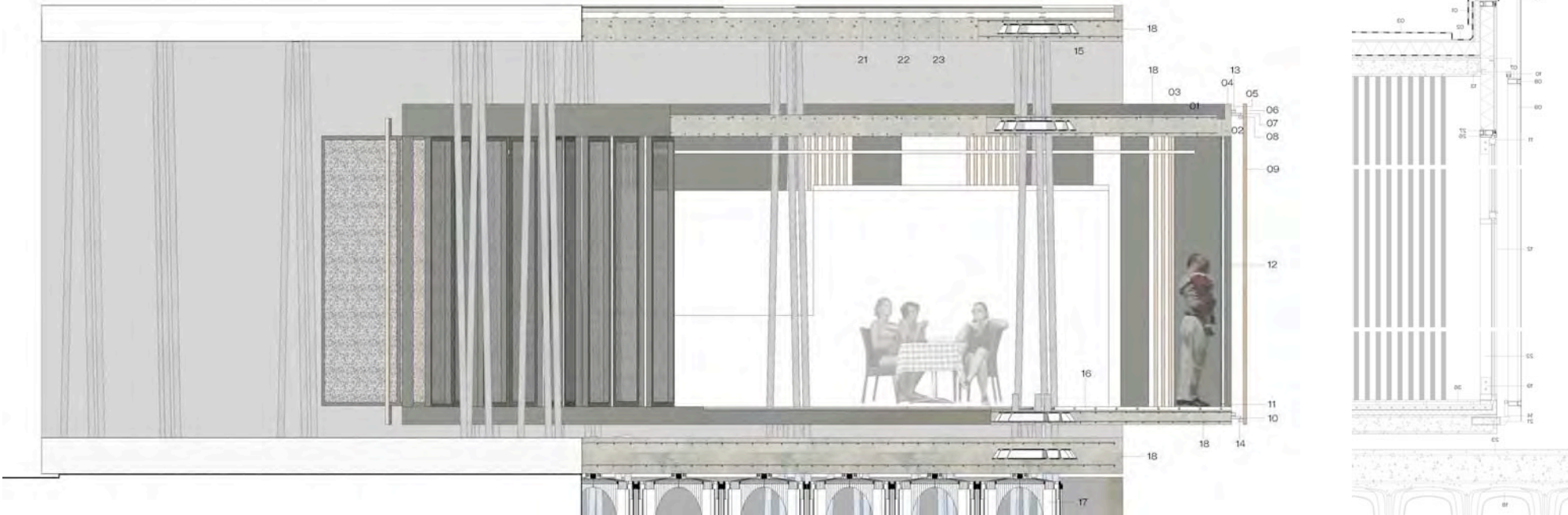
ARCHITECT: Inaki Canete
STRUCTURAL ANALYSIS: YAEGER & JORDAN S.L.



Isla Cristina is a Spanish village located in the west coast in the province of Huelva, Andalusia, about 7 km from the Portuguese border and framed in the West Coast region. It has a population of 21,903 inhabitants and an area of 50 km².

The visitor center is located on a site open to the estuary, which in turn flows into the sea, and Western el mite municipality. The coastal edge which is is and historically has been tied to a particular industrial use primarily linked to fishing and everything derived from it. The fish market Cristina island, the second largest in Andalusia, is located a few blocks of the site, and the surrounding buildings are all related to this discipline. All this fishing edge faces away from residential use eventually integrated into the urban environment.



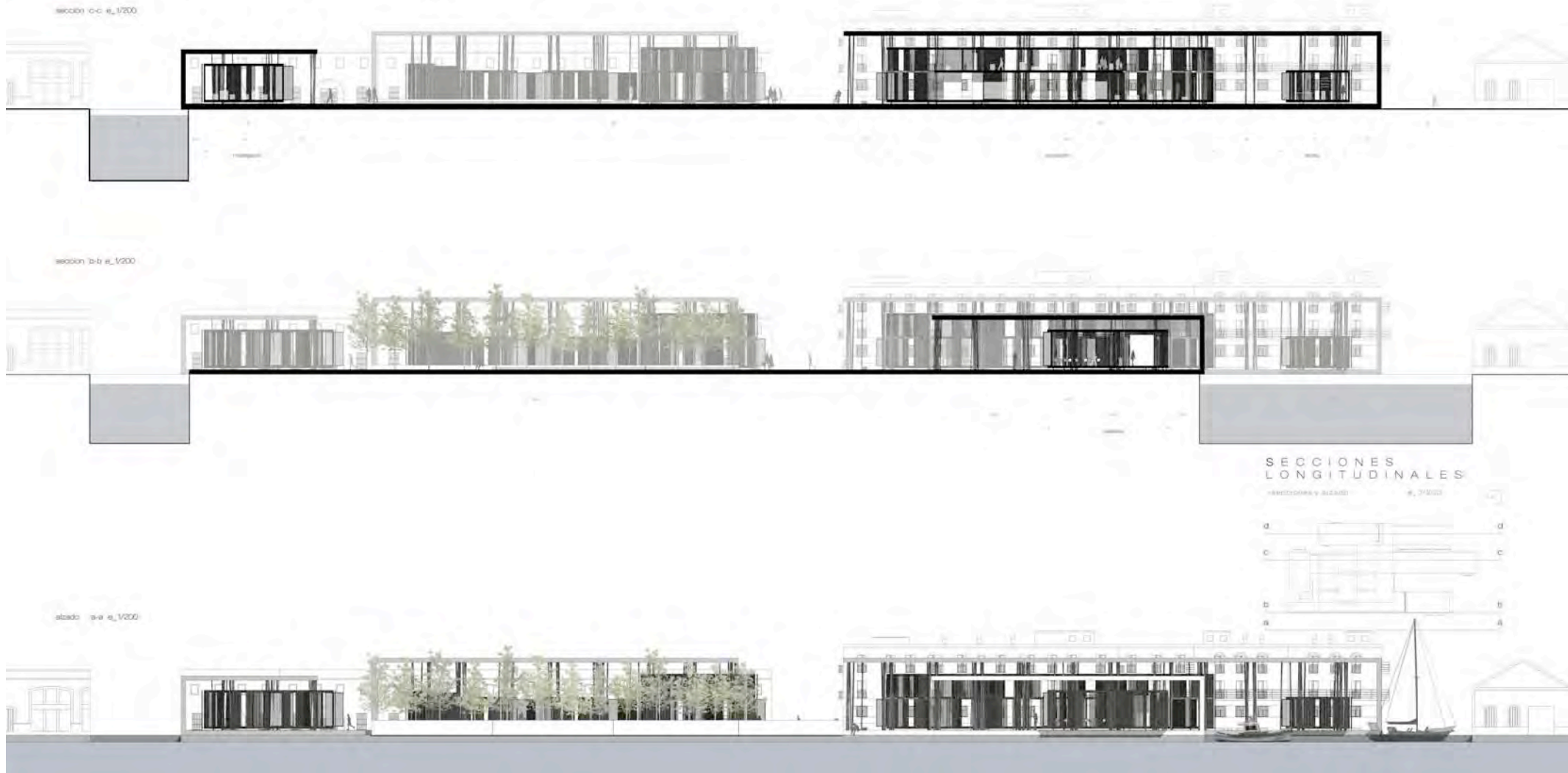


the construction system of the entire complex can be explained in three steps:

1-. the "fold/case": is a concrete slab that wraps itself creating spaces that will house its own uses after project. This slab is supported directly on the ground, but avoid through a non-recoverable formwork system, which have the height needed to form a suspended floor and registrable. Are these molds which rest on compacted soil and a layer of lean concrete. This way is isolated from moisture by capillary marshy ground, reclaimed from the sea, and permanently wet.

2-. support: the slab, to fold in on itself, creating a giant overhangs are resolved by relying on groups of 3 columns/pillars arranged in a grid pattern on virtual axes and defined separation of 5 m. The lights are not very large, so we can take a small column section. The pillars are intentionally inclined at cones each other.

3-. the "boxes": house project uses. Constructively are strung between the slabs of the "fold" through the pillars directly without touching the ground. Have a double skin and sheet glass at one side and a sliding louvre system formed by fixed slats of wood.



YAEGER & JORDAN

architects + engineers

C/ General Prim 13 28004 Madrid

C/ Principe de Vergara 35 28001 Madrid

C.I.F. B84138981

2001_2022